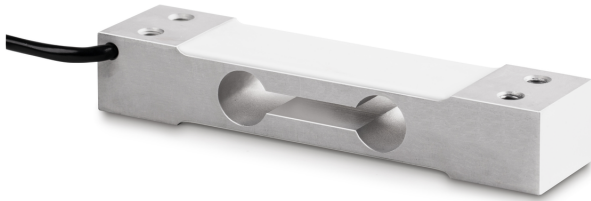


KERN CP 15-3P1

KERN

Single-point load cell made of anodised aluminium



Load cell - Recommended excitation voltage [Max] 12 V

Load cell - Input resistance - variance 6 Ω

Load cell - Output resistance - variance 3 Ω

Directions of force compression

Approval

CE mark ✓

Construction

Design Singlepoint load cell

Dimension (W×D×H) 130×30×22 mm

Material aluminium

Cable length 0,4 m

Mounting - force application 2 × threaded hole M6

Mounting - force dissipation 2 × threaded hole M6

Functions

IP protection - complete device IP65

Environmental conditions

Use temperature [Min] -10 °C

Use temperature [Max] 40 °C

Ambient temperature [Min] -35 °C

Ambient temperature [Max] 65 °C

Storage temperature [Min] -40 °C

Storage temperature [Max] 70 °C

Packing & Shipping

Readability force [d] (N) 1 d

Dimensions packaging (W×D×H) 160×95×45 mm

Net weight 0,177 kg

Shipping method Parcel service

Net weight approx. 0,20 kg

Gross weight approx. 0,25 kg

Shipping weight 0,217 kg

Services (optional)

Article number for DAkKS calibration (compressive force) 963-261V

Category

| | |
|------------------|----------------|
| Brand | Sauter |
| Product category | Measuring cell |
| Product group | Load cell |
| Product family | CP P1 |

Measuring System

| | |
|--|---|
| Weighing capacity [Max] | 15 kg |
| Load cell connection | 4-wire |
| Load cell OIML class | C3 |
| Load cell - Resolution (verifiable) | 3000 e |
| Temperature coefficient - zero signal | $\leq \pm 0.02\%FS/10\text{ }^{\circ}C$ |
| Creep error (30 minutes) | $\leq \pm 0.0167\%FS$ |
| Safe overload | 150%FS |
| Ultimate overload | 300%FS |
| Zero balance | $\leq \pm 2.0\%FS$ |
| Maximum platform size | 250×350 mm |
| Temperature coefficient - characteristic value | $\leq \pm 0.0175\%FS/10\text{ }^{\circ}C$ |
| Load cell - characteristic value - nominal | 2 mV/V |
| Load cell - characteristic value - variance | 0,2 mV/V |
| Load cell - Y-value | 10000 |
| Load cell - Combined error | 0,023% |
| Load cell - Dead load [Min] (%) | 0% |
| Measuring applications | mass |
| Load cell - Input resistance - nominal | 409 Ω |
| Load cell - Output resistance - nominal | 350 Ω |
| Load cell - Isolation resistance - [Min] | 5000 M Ω |
| Load cell - Recommended excitation voltage [Min] | 5 V |

KERN CP 15-3P1

Single-point load cell made of anodised aluminium



Pictograms

STANDARD



OPTION

